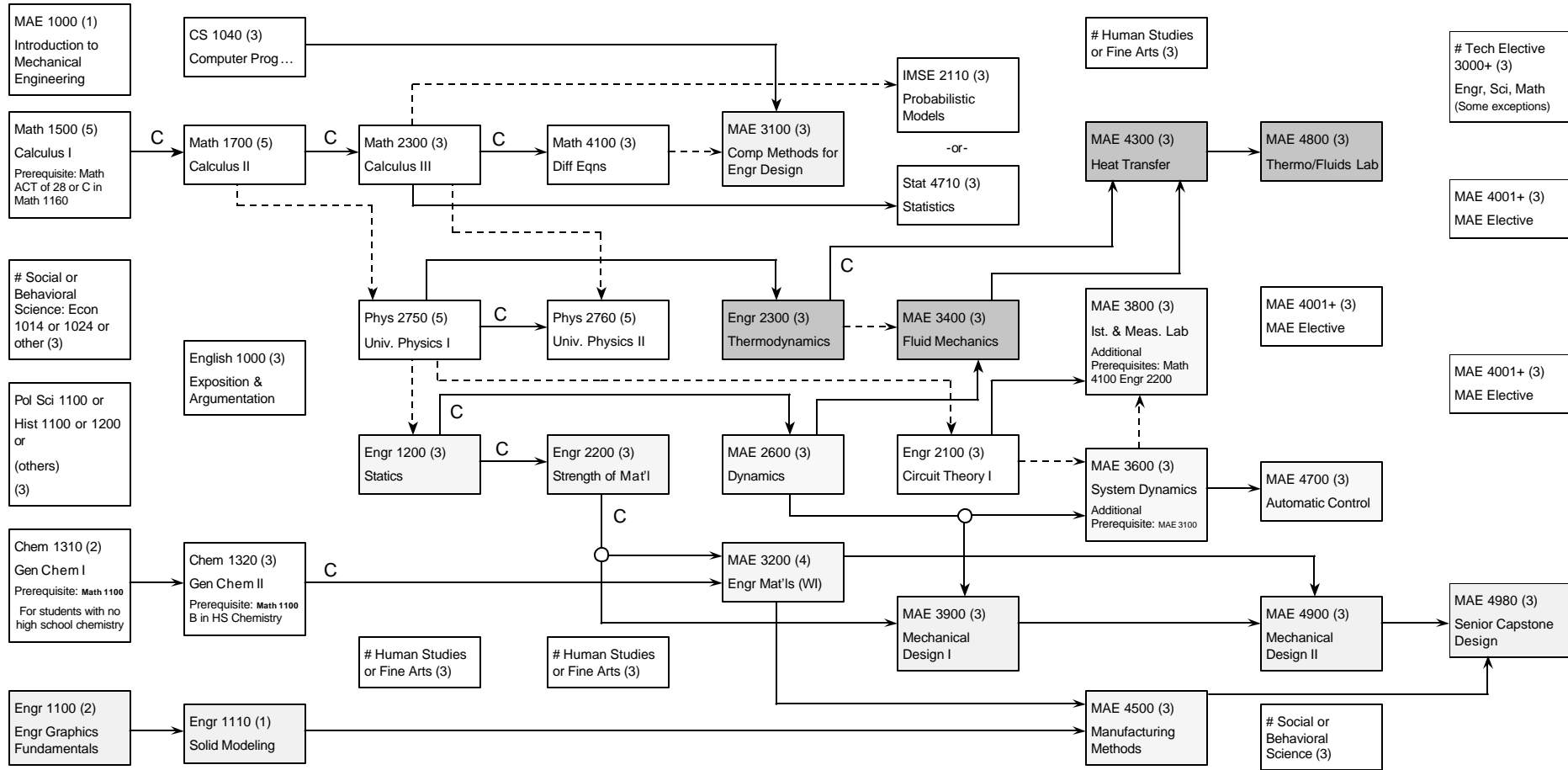


**Mechanical Engineering degree requirements for student entering MU FS04 or later.**

Name: \_\_\_\_\_

Student Number: \_\_\_\_\_

**FS 2006**      **WS 2007**      **FS 2007**      **WS 2008**      **FS 2008**      **WS 2009**      **FS 2009**      **WS 2010**      **FS 2010**  
 16 hours      15 hours      14 hours      14 hours      13 hours      12 hours      15 hours      15 hours      12 hours



- Solid lines indicate prerequisites; dashed lines indicate co-requisites.
- Nine hours must be completed in each of the Behavioral Science / Social Science and Humanities / Fine Arts areas. For a list of accepted Behavioral Science / Social Science and Humanities / Fine Arts course, please go to: <http://web.missouri.edu/~umcengrmaeweb/courses/genedu/genedu.html>. One course of the 18 hours must be numbered 2000 or above.
- ME students must satisfy an economics requirement by taking Econ 1014 or 1024 OR IMSE 2710. Econ 1014 and 1024 are considered Social Science courses. IMSE 2710 satisfies the Technical Elective requirement.
- # One elective must be from the approved list of Writing Intensive courses (prerequisite for all WI courses: English 1000). WI course number: \_\_\_\_ Please see <http://cwp.missouri.edu/wicourses/index.htm> for a list of WI courses, after choosing one from the list please compare it to the accepted Behavioral Science / Social Science and Humanities / Fine Arts list to assure that it will be accepted in the MAE department.
- All candidates for the BS in Mechanical Engineering are required to have a GPA of at least 2.0 based on all the courses with an Engineering designation (i.e., MAE, Engr, CE, etc.). This requirement includes all equivalent engineering courses transferred from other campuses of the UM System.
- Note: To complete required courses in 8 semesters, student must earn 15 to 17 credit hours per semester. The average course load for engineering students is 13 to 14 hours per semester. Most students finish in 9 or 10 semesters or attend summer classes to complete the program in 8 semesters.