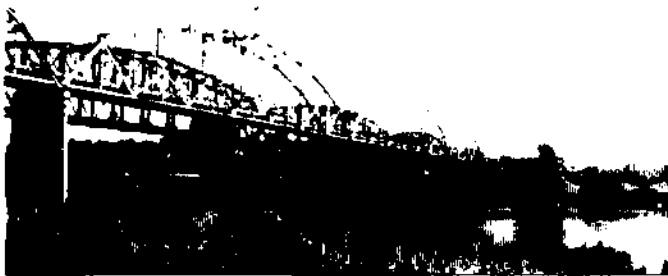


# Proposed Glasgow Bridge Improvements

***Innovative solutions can provide cost-effective improvements to this Missouri River crossing.***



### GLASGOW BRIDGE (Route 240) — TODAY

- Built in 1922
- Worst condition major river bridge
- Rehabilitated in 1986
- Continual maintenance on the bridge
- Unscheduled bridge closures
- Narrow roadway — 20.3 feet
- Vertical clearance — 14.9 feet

### GLASGOW BRIDGE — TOMORROW ?

- New roadway and girders
- 26-foot wide (11-ft lanes, 2-ft shoulders)
- No vertical clearance restrictions
- Extends life by 50 years
- Minimizes future maintenance
- Minimizes environmental issues/impacts
- Accelerated construction schedule

## Glasgow Bridge (Route 240) OPTIONS

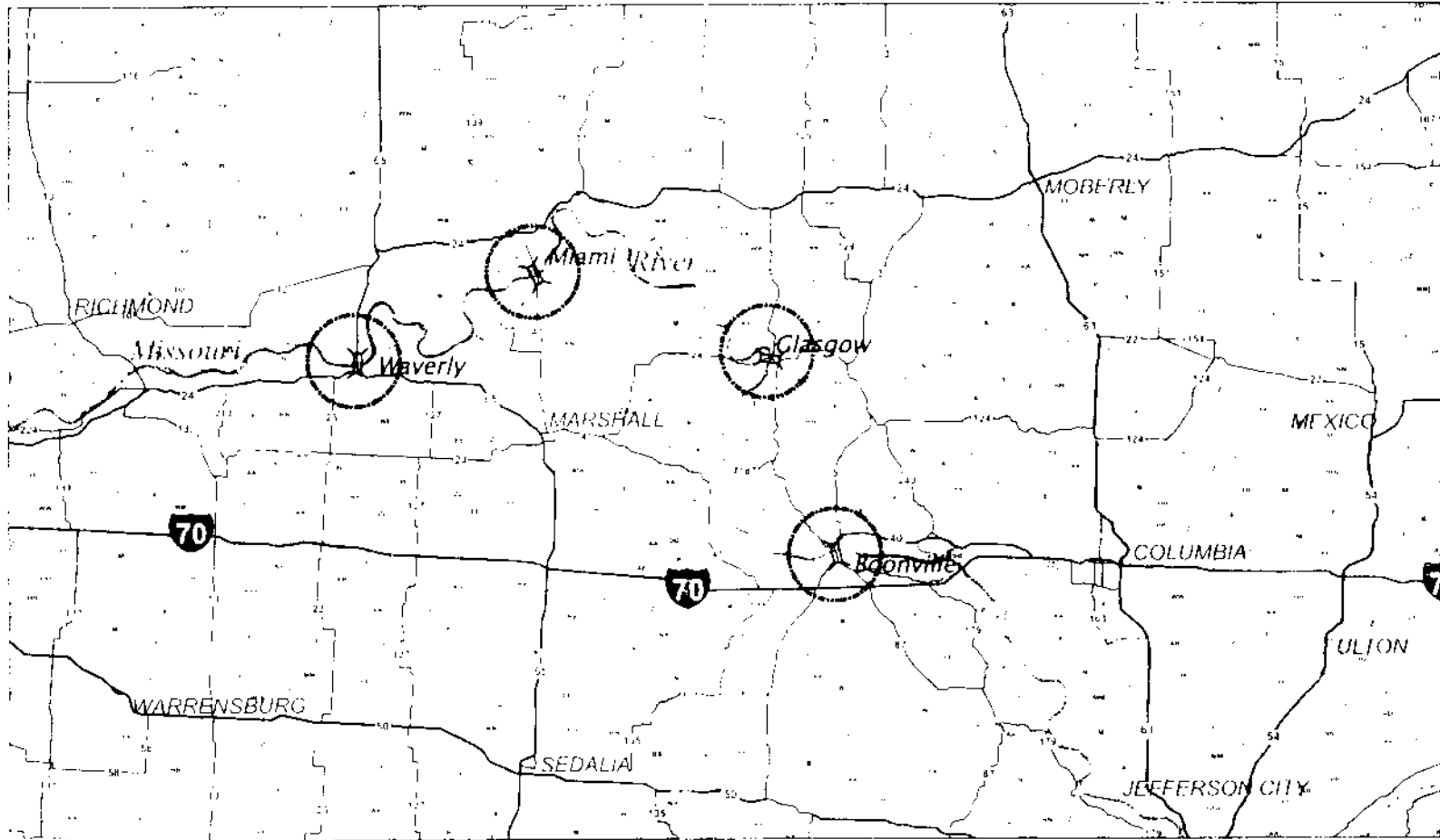
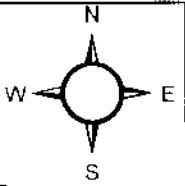
No Const. Cost  
 \$11-13 million  
 \$14-15 million  
 \$22+ million

- A. No-Build
- B: Rehabilitation of existing bridge
- C: Partial Replacement
- D: Complete Replacement (*Bridge ONLY, no R/W, roadway, etc.*)



# Glasgow, Miami Bridge Improvements

Glasgow Bridge (Route 240), Miami Bridge (Route 41)



Area Locator



Major River Bridges